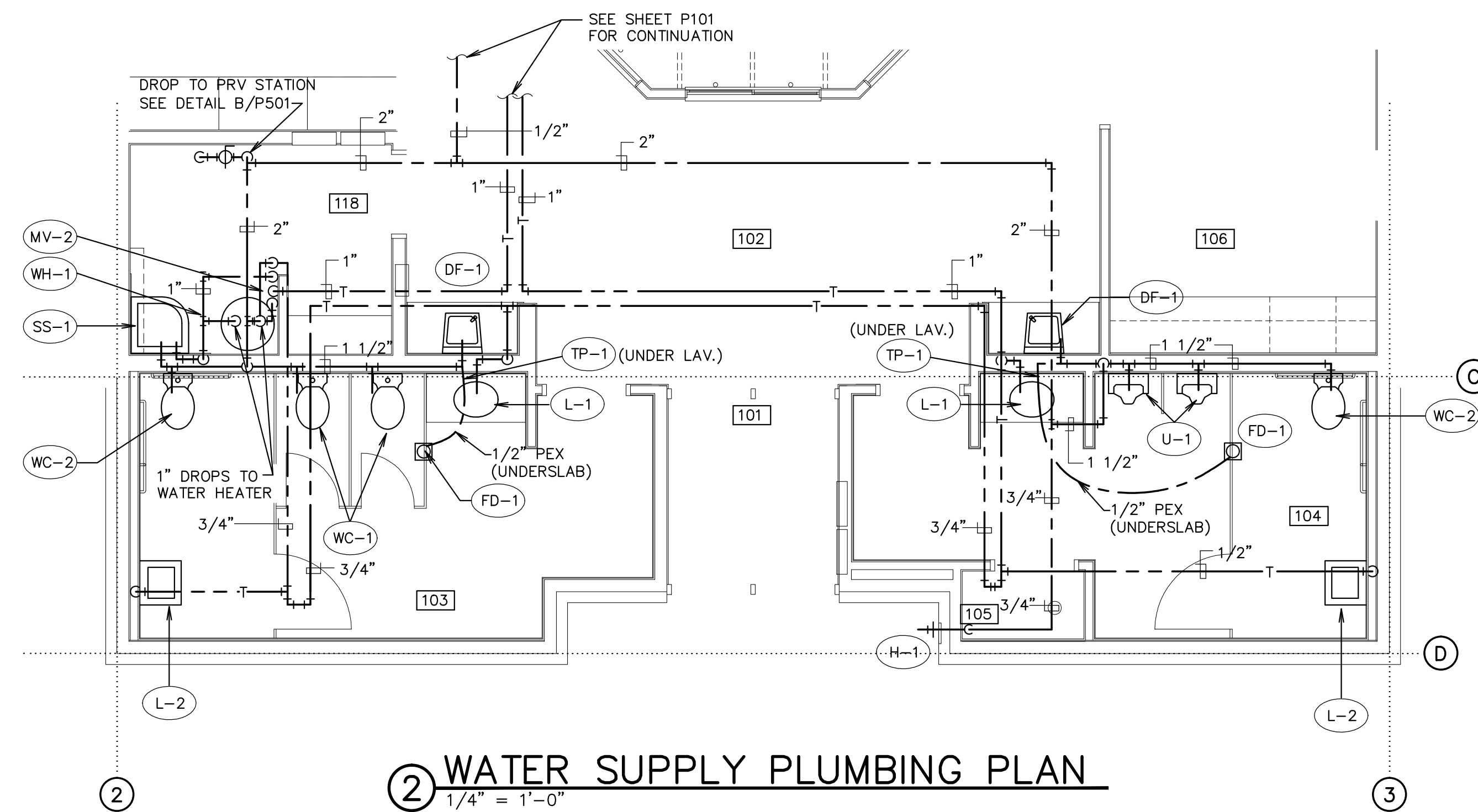


① WASTE AND VENT PLUMBING PLAN
1/4" = 1'-0"



② WATER SUPPLY PLUMBING PLAN
1/4" = 1'-0"

PLUMBING FIXTURE SCHEDULE ①

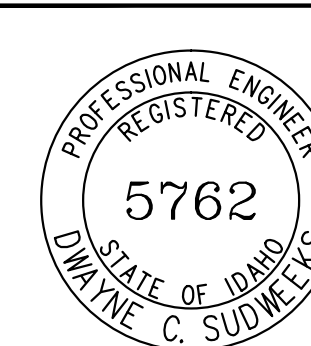
MARK	FIXTURE	PIPE SIZE					REMARKS
		TRAP	WASTE	VENT	C.W.	H.W.	
WC-1	WATER CLOSET	INT.	4"	2"	1"	-	FLUSH VALVE SENSOR ACTUATED HET
WC-2	WATER CLOSET	INT.	4"	2"	1"	-	FLUSH VALVE, 18" RIM HEIGHT (ADA APPROVED) SENSOR ACTUATED HET
U-1	URINAL	INT.	2"	2"	3/4"	-	FLUSH VALVE SENSOR ACTUATED HEU
L-1	LAVATORY	1-1/4"	1-1/4"	1-1/2"	-	1/2"	COUNTER TOP
L-2	LAVATORY	1-1/4"	1-1/4"	1-1/2"	-	1/2"	SELF SUPPORTING 20"x18" SEE ELEVATIONS SHEET A401 ②
SS-1	SERVICE SINK	3"	3"	2"	1/2"	1/2"	FLOOR TYPE
D-1	DISPOSER	-	1-1/2"	-	-	-	3/4" HP
S-1	WORK ROOM SINK	1-1/2"	1-1/2"	1-1/2"	1/2"	1/2"	TWO COMPARTMENT (ADA APPROVED)
DF-1	DRINKING FOUNTAIN	1-1/2"	1-1/2"	1-1/2"	1/2"	-	ELECTRIC - SEE ELEVATIONS SHEET A401 (ADA APPROVED)
SA-1	WATER HAMMER ARRESTOR	-	-	-	-	-	1" SEE SPECIFICATIONS
FD-1	FLOOR DRAIN	2"	2"	2"	-	-	WITH DEEP SEAL P-TRAP AND "TRAP GUARD". SEE DETAIL A/P502
CR	CONDENSATE RECEIVER	2"	2"	2"	-	-	SEE DETAIL H/P501 FABRICATED PVC
H-1	HYDRANT	-	-	-	3/4"	-	USE NON-FREEZE TYPE IF DESIGN TEMPERATURE BELOW 35° F.
WH-1	WATER HEATER	-	-	-	1"	1"	GAS FIRED 100,000 BTU/HR. MINIMUM INPUT, 94% THERMAL EFFICIENT, CONDENSING TYPE, 34 GALLON TANK MAXIMUM
MV-2	MIXING VALVE	-	-	-	3/4"	3/4"	SET TO DISCHARGE AT 110° F. SEE DETAIL C/P501. CONFORMS TO ASSE 1070.
CP-1	CIRCULATING PUMP AND PUMP CONTROL	-	-	-	-	3/4"	CIRCULATING PUMP: 1/8 HP 3 SPEED, 1.8 AMPS 3.5 GPM AT 28FT TOTAL HEAD. ③
TP-1	FLOOR DRAIN TRAP PRIMER	-	-	-	1/2"	-	SINGLE TRAP PRIMER ASSEMBLY MOUNTED UNDERCOUNTER ON WALL ADJACENT TO LAVATORY. SEE DETAIL ON SHEET P501

① COLD WATER FIXTURE UNITS ARE 71
WASTE WATER FIXTURE UNITS ARE 47

② WHEN MOUNTED PER ARCHITECTURAL ELEVATIONS, ADA
ACCESSIBILITY REQUIREMENTS ARE SATISFIED.

③ COMPLETE WITH FLOW SENSOR,
TEMPERATURE SENSOR WIRELESS
RECEIVER AND 2 MOTION SENSORS. SEE
SPECIFICATION.

ORIGINAL DRAWING SIGNED BY: DWAYNE C. SUDWEEKS
DATE ORIGINAL SIGNED: Nov 29, 2017
ORIGINAL ON FILE AT ENGINEERED SYSTEMS ASSOCIATES
1355 EAST CENTER, POCATELLO, IDAHO 83201



Engineered Systems Associates
1355 EAST CENTER
POCATELLO, IDAHO 83201
PHONE: (208) 233-0501
FAX: (208) 233-0529
EMAIL: esa@eng